



# Centralized Management of MDF/IDF Closets

## Key Benefits:

### Maintain Uptime

- Constant monitoring of critical facilities infrastructure to ensure uptime and redundancy
- Built-in alerting to enable you to react before failures impact users and services
- Data collection, retention, trending, and reporting transforms your data into actionable insights

### Improve Efficiency of Capacity Utilization

- Quickly model and allocate power, space, cooling, and connections for new servers
- Locate stranded capacity to get the most out of your existing resources and defer costly new buildouts
- Know if you are wasting energy and money by overcooling

### Increase Productivity of People

- Remote visualization of cabinets, contents, and connections reduces troubleshooting time and eliminates the need to send someone onsite
- Easily create and distribute management reports with over 100 out of the box dashboard charts and reports
- Integrates with your existing CMDB, ticketing, and other tools to reduce manual effort and swivel chair management

***“The support from Sunbird is beyond excellent. They’re very quick to respond to inquiries and are always willing to provide whatever help we need.”***

Dennis Hayslip, Project Manager,  
Lockheed Martin

## Remotely Manage Thousands of MDF/IDF Closets with Ease

Main Distribution Frame (MDF) and Intermediate Distribution Frame (IDF) closets are integral parts of a distributed IT system. An MDF is the demarcation point that interconnects private or public IT and telecommunications lines coming into a building or campus facility to an internal network via any number of IDFs which cross connect from the MDF to remote workstation devices.

As modern data center environments become more distributed, MDF/IDF closets are now elevated to mission-critical status for many organizations.

However, it’s a common problem for MDF/IDF closets to be overlooked and mismanaged, especially compared to more traditional data center sites. Common challenges include lack of visibility into equipment inventory, their configuration, and rack capacity at remote sites, inaccurate work orders to remote technicians, and the inability to monitor site health and ensure physical security.

Sunbird Software’s second-generation DCIM solution provides the complete suite of capabilities that you need to remotely monitor and manage all your MDF/IDF across all remote closets and edge sites.

## Visualize Panels, Cables, and Connections Across All Closets

- Say Goodbye to Excel® and Visio® – Maintain an accurate inventory of your assets across all MDF/IDF closets with real-time views of cabinet elevations, IT assets including servers and panels, and their associated cabling and port-level interconnections.
- Understand Structured and Patch Cabling – Network diagrams and circuit trace diagrams enable you to visualize active and passive components, and quickly troubleshoot issues.
- Asset Audit Feature – Perform faster and more accurate single-person audits with barcode/QR code scanning, configurable voice response, and built-in validation features.

## Monitor and Alert on Power and Environmental Conditions

- See the Health of All Remote Closets and Edge Sites at a Glance – In a single pane of glass, understand the real-time power and environmental health and events for all MDF/IDF closets with red-yellow-green color coding and the ability to drill down for the underlying data.
- Be the First to Know of Issues – Set thresholds on over-power conditions, breaker state change, hot spots, UPS battery issues, and more to receive automatic email alerts so you can quickly remediate issues before they become bigger problems.
- Intelligent Power Capacity Planning – Monitor actual rack power and UPS loads to understand the overall trend of your power consumption and battery run time to maximize uptime and availability of IT services.

## Safeguard MDF/IDF Closets and Assets from Physical Threats

- Centralized Security Management – Reporting, audit logs, and video surveillance feeds allow you to monitor who has accessed various closets and cabinets, how often they are accessed, and if attempts are successful or not.
- Electronic Cabinet Door Access Control – Local RFID authentication or remote control of all your electronic cabinet door locks mitigate security risks and comply with regulations.

## Enable Visibility and Transparency with Dashboards and Reports

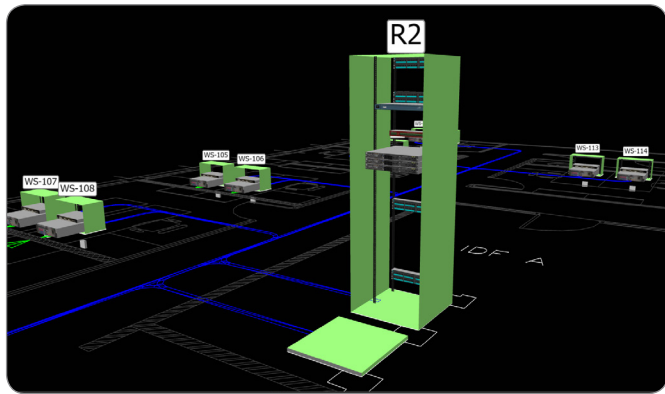
- Zero-Configuration Analytics – Transform your data into actionable information with 100+ out of the box charts and reports for the most common reporting use cases. Plus, access our support portal for another 100+ crowdsourced report widgets.
- Democratized Data – Create, edit, and share personalized dashboards to enable data-driven collaboration across functional teams. Schedule management reports to be automatically generated and emailed on a recurring basis.



# Centralized Management of MDF/IDF Closets

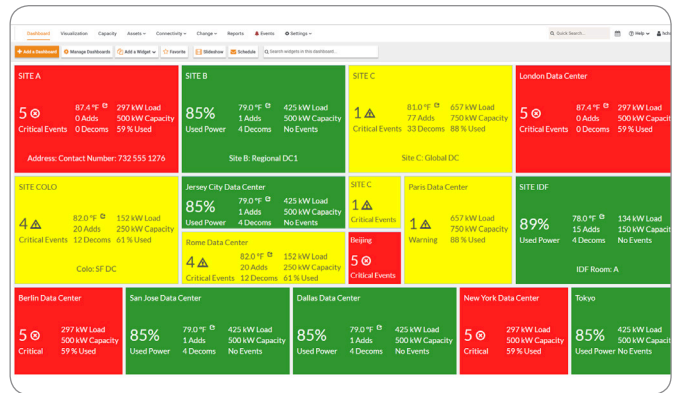
## 3D Visualization of Cabinets & Contents

Remotely visualize cabinet and row elevations as if you are standing in front of them. Easily see cabinet contents and panel placement including above the cabinet. Overlay real-time readings for power, temperature, and humidity for an experience that is better than actually being there.



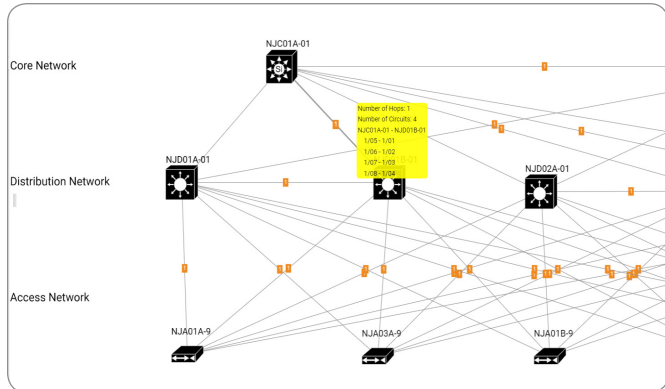
## Enterprise Health Dashboard

Get a centralized view of the health and capacity of your global footprint with the ability to click to drill down to obtain details at the floor, room, pod, row, cabinet, and device levels. Set thresholds and receive alerts for critical and warning level events from all of your closets, edge, and remote sites.



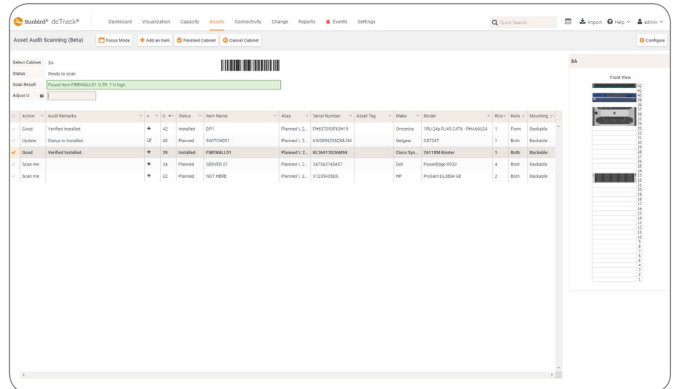
## Automatic Data Network Diagrams

Visualize what's connected to what, across both active and passive network components, and across all closets, campus, and edge sites to decrease time spent troubleshooting and planning. View in tiered or mesh mode, display nodes as shapes, icons, or model images, and color code nodes based on their attributes.



## Automated Asset Audits

Quickly and accurately perform asset audits with a barcode/QR code scanner. The configurable voice response, built-in logic, and streamlined workflow anticipates the next step in the audit process. Necessary changes are annotated on assets for later review and processing without disrupting the audit.



Call 732.993.4476 or visit [SunbirdDCIM.com](http://SunbirdDCIM.com)

Sunbird Software is changing the way data centers are being managed. With a focus on real user scenarios for real customer problems, we help data center operators manage tasks and processes faster and more efficiently than ever before, while saving costs and improving availability. We strive to eliminate the complexity they have been forced to accept from point tools and home grown applications, removing the dependency on emails and spreadsheets to transform the delivery of data center services. Sunbird delivers on this commitment with unexpected simplicity through products that are easy to find, buy, deploy, use, and maintain. Our solutions are rooted in our deep connections with our customers who share best practices and participate in our user groups and product development process.

Based in Piscataway, NJ, Sunbird serves over 1,850 DCIM customers worldwide. For more information, please visit [SunbirdDCIM.com](http://SunbirdDCIM.com).

© 2022 Sunbird Software. All rights reserved. dTrack and Power IQ are registered trademarks of Sunbird Software. All other marks and names mentioned herein may be trademarks of their respective companies.

