



Managing Your Lab Infrastructure with Sunbird

Customer Quotes

- *"It takes a lot of work to track and manage assets, especially in a dynamic product development environment. Sunbird's reporting and 3D visualization features make everything so much easier, and that is critical for my internal customers."*



Kiel Anderson,
Snr Mgr, Product
Development

- *"It lets me control the power intake and output in my labs. It lets me get a better view of what my equipment is doing and what I need to change in my power requirements."*



Michael G.,
Critical Power
Engineer

A Single Pane of Glass and Digital Twin for All Your Labs

IT lab environments present unique infrastructure management challenges due to their dynamic nature and specialized equipment. Unlike traditional data centers, labs often experience frequent equipment changes, have limited asset tracking abilities, and operate with minimal awareness of power consumption. These issues can cause inefficiencies, unexpected downtime, and poor collaboration between lab techs and other teams. However, Sunbird provides a modern solution for overcoming these challenges.

Centrally Manage Expensive and Nonstandard Lab Assets

- **Gain a Single Repository for All Lab Assets** — Maintain a single source of truth for all your unique lab equipment. Catalog every asset with key details such as exact rack and U position, technical specifications, and physical connections.
- **Streamline Asset Ownership Tracking** — Track IT assets by current user, ensuring lab resources are properly accounted for. Provide team leaders with clear visibility into the assets they own, improving accountability and eliminating confusion.
- **Visualize Asset Locations and Dependencies** — Get a digital twin of your lab including a 3D floor map with your lab benches and rack elevations. See exactly where each device is located, how it connects to other physical assets, and how changes will impact the broader lab infrastructure.

Document All Moves, Adds, Changes in the Lab

- **Leverage Built-In Workflow Processes** — Streamline workflows by documenting requests, approvals, and implementations in one system. This reduces errors, drives accountability, and keeps all stakeholders informed of equipment status throughout the process.
- **Reduce Manual Effort** — Integration with corporate ticketing systems like ServiceNow, Cherwell by Ivanti, Jira, and BMC eliminates repetitive data entry across multiple systems.
- **Enhance Change Management** — Track ticket details (e.g., creator, work order details, status, actions taken) and provide visual work orders with rack elevations for accurate task assignment and completion. Automatically share the status of all tickets with ITSM systems to consolidate information for better visibility and collaboration.

Gain Real-Time Visibility Into Lab Health and Capacity

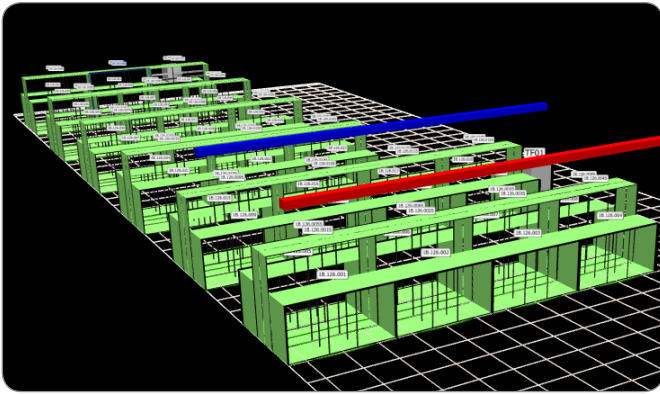
- **Monitor Power in Real Time** — Track power usage at the device, rack, and circuit level with threshold alerts to prevent potential circuit breaker trips.
- **Maximize Resource Utilization** — Avoid overprovisioning and bottlenecks by tracking space, power, cooling, and port capacity and utilization at every rack. Use capacity trends to forecast and justify budget requests for additional lab resources.
- **Reserve Resources With a Click** — Easily find and reserve space, power, and network connectivity for lab devices.
- **Improve Energy Efficiency** — Gain insights into the actual energy consumption of lab equipment to make data-driven decisions that reduce waste and lower operational costs. Remotely shut down idle equipment to save energy and money.



Managing Your Lab Infrastructure with Sunbird

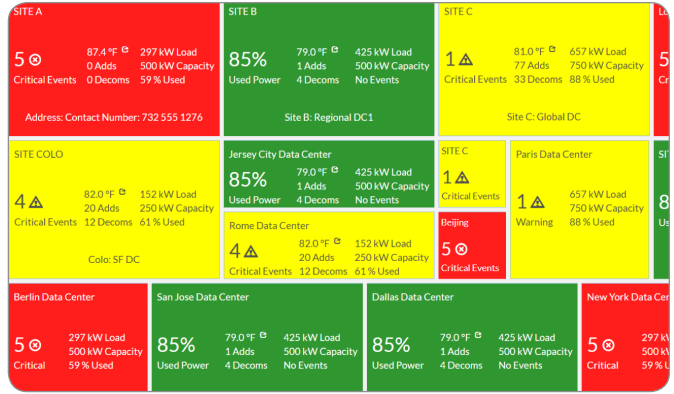
Digital Twin Visualization

Visualize the benches and equipment in your lab as if you were there. Overlay live measured readings from power and environmental sensors.



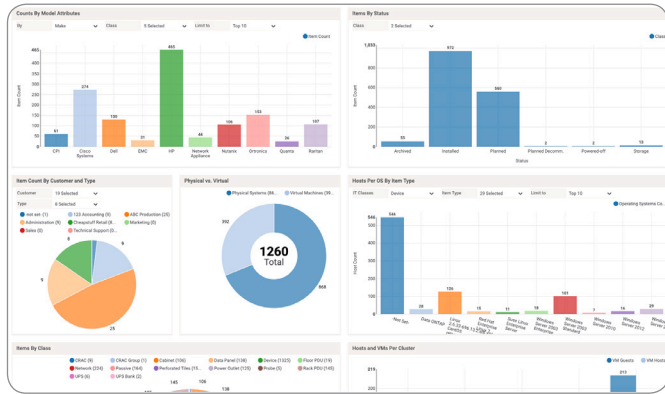
Lab Health Dashboard

A single pane of glass to view key performance indicators about each lab such as health, power, temperature, and changes, with easy drilldown to more details.



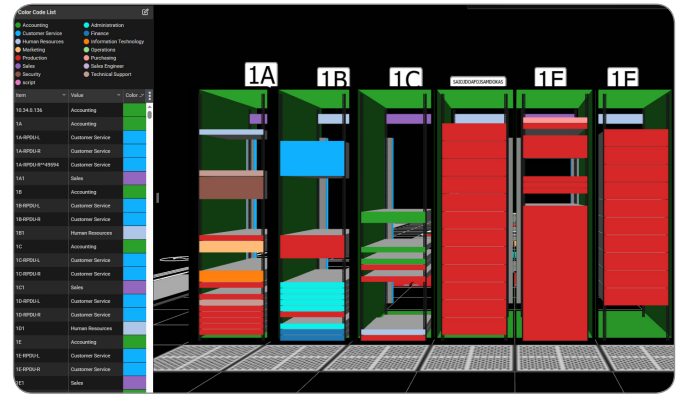
Asset and Parts Inventory Dashboards

With 100+ out-of-the-box charts/reports, the information you need is always at your fingertips like tracking your inventory by attributes such as owner or status.



Search and Color Assets by Attributes

Visually search for assets in your lab and color-code them by any attribute such as customer or project to easily see what's in use.



Call 732.993.4476 or visit SunbirdDCIM.com

Sunbird Software is changing the way data centers are being managed. With a focus on real user scenarios for real customer problems, we help data center operators manage tasks and processes faster and more efficiently than ever before, while saving costs and improving availability. We strive to eliminate the complexity they have been forced to accept from point tools and home grown applications, removing the dependency on emails and spreadsheets to transform the delivery of data center services. Sunbird delivers on this commitment with unexpected simplicity through products that are easy to find, buy, deploy, use, and maintain. Our solutions are rooted in our deep connections with our customers who share best practices and participate in our user groups and product development process.

Based in Piscataway, NJ, Sunbird serves over 2,000 DCIM customers worldwide. For more information, please visit SunbirdDCIM.com.

© 2025 Sunbird Software. All rights reserved. dcTrack and Power IQ are registered trademarks of Sunbird Software. All other marks and names mentioned herein may be trademarks of their respective companies.

