



Starline® Track Busway Monitoring with Power IQ® DCIM Software

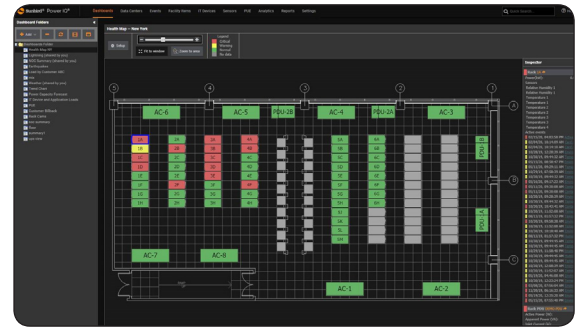
Centrally Manage All Tap Boxes with a Simple, Intuitive Web-Based Dashboard

Power IQ® (PIQ), Sunbird Software’s data center monitoring tool, provides the information you need to fully utilize your Starline Track Busway infrastructure, while alerting you to trouble before it causes service-impacting downtime. PIQ’s power, energy, and environment monitoring functionality scales to meet your needs, allowing you to securely keep tabs on all your Starline Busway end feeds and tap boxes, plus other CRACs, UPSs, PDUs, RPPs, meters, branch circuits, rack PDUs, environment sensors, and electronic door locks—all from a single easy-to-use web browser.

Make Informed Power and Capacity Planning Decisions

PIQ software tracks actual power load of Starline Tap Boxes, providing more accurate power and capacity planning information.

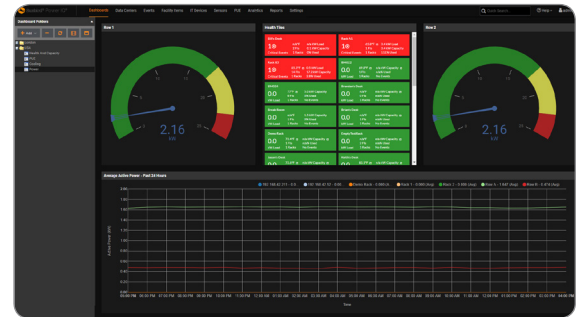
- Find Stranded Power Capacity at Rack Feeds – Newly found capacity delays expensive capital expenditure.
- Project Future Power Capacity Needs – Trending and days of supply projections enable accurate forecasting.
- Visualize Rack- and Row-Level Power Usage – Easily understand total usage vs. budgeted capacity at the cabinet and end feeds and monitor usage trends over time.



Monitor and Centralize Alerts to Prevent Costly Unplanned Downtime

Avoid unplanned downtime that can cost hundreds of thousands of dollars per outage and the health of your complete data center, including critical infrastructure like Starline Busways.

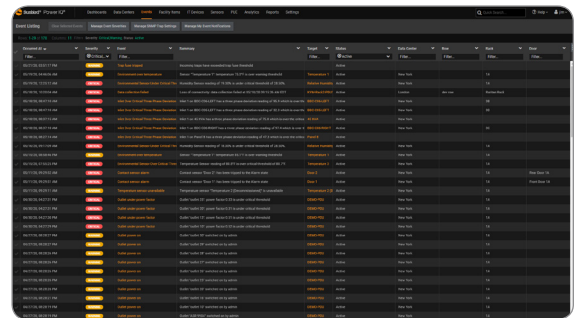
- Simulate Rack Failover – Reports identify available capacity to ensure redundancy in case of failure.
- Visualize Data Center and Facility Health Status – Health map of your data center floor with red, yellow, and green color-coding provides an at-a-glance view of rack load levels, line currents, and all environmental conditions.
- Alerting and Alarming of Threshold Violations – Automated emails enable quick identification of overcurrent conditions, breaker load threshold violations, 3 phase balance issues, and potential trouble areas.
- Multi-Tile Health Chart Widget – See red, yellow, and green health data for all your data centers, rooms, PODs, zones, rows, and racks in a single screen with the ability to drill-down for full details.



Utilize Power Resources Efficiently and Improve PUE

PIQ automatically collects power and environmental data from sensors and turns that data into actionable insights.

- Real-Time Power Usage Effectiveness (PUE) – See real-time measurements of total facility energy vs. your total IT equipment energy to gauge efficiency and identify opportunities to improve.
- Bill Back Energy Costs Based on Usage – Automatically generated bill back reports drive more energy efficient behavior.





Starline[®] Track Busway Monitoring with Power IQ[®] DCIM Software

Sunbird Software, as the software partner of Starline Busway, supports all meters offered by Starline. The list of meters is extensive and will continue to grow. The following table is a living document that describes the series and models supported in PIQ as of version 7.0. If you have a newer version of PIQ, and Starline has introduced new models, it's likely that PIQ will already support those. The table further describes the typical location that the Starline meter is placed, whether it is at the end feed of a row or the tap box above a rack. It describes whether PIQ collects data from the inlet or outlet of the meter. The tap box meter measures the load at the outlet and can be represented as a rack PDU inlet in PIQ, which correlates to a rack. The end feed meter measures the load at the inlet of the end feed, and that object in PIQ could represent a stand alone meter. A stand alone meter or rack PDU inlet meter consumes one PIQ license each. Further, we provide the last polled reading of data per model such as watts, power factor, kilowatt hour, KVA, and amps. PIQ always supports the traps that come from the meter. PIQ collects other attributes about the models such as firmware version, name, and location, and gives you the ability to set the name and location on the meter in bulk. PIQ 8.0, targeted for October 2020, will provide the ability to bulk update the firmware on one or more meters.

Series	Model	Meter Type	PIQ Data Collection Point	Circuit Breaker Status Reported	Notes	Represented in PIQ as	Data Collection	Trap Support	Firmware Version Reported	Report/Configure Name & Location	PIQ License
M40 Series	M41x	Tap Box	Infeed	No	Sum of Load of Outlets	Rack PDU Inlet*	Watts, PF, KW-Hr, KVA, Amps, Voltage	Yes	Yes	Yes	1 Per Meter
	M43x										
	M45x										
	M47x										
	M41xx	End Feed	Infeed	No		Stand Alone Meter	Watts, PF, KW-Hr, KVA, Amps, Voltage	Yes	Yes	Yes	1 Per Meter
	M43xx										
	M45xx										
	M47xx										
V40 Series	V41x	Tap Box	Outlet	No	Each Outlet is Metered	Rack PDU Inlet	Watts, PF, KW-Hr, KVA, Amps	Yes	Yes	Yes	1 Per Metered Outlet
	V43x										
	V45x										
	V47x										
M50 Series	M51x	Tap Box	Infeed	No	Sum of Load of Outlets	Rack PDU Inlet*	Watts, PF, KW-Hr, KVA, Amps, Voltage	Yes	Yes	Yes	1 Per Meter
	M53x			Yes							
	M56x			No							
	M57x										
	M58x										
	M59x										
V50 Series	V51x	Tap Box	Outlet	No	Each Outlet is Metered	Rack PDU Inlet	Watts, PF, KW-Hr, KVA, Amps	Yes	Yes	Yes	1 Per Metered Outlet
	V53x			Yes							
	V56x			No							
	V57x										
	V58x										
	V59x										

*Single outlet models can be represented as a connected device such as a rack PDU or a large IT device

Call 732.993.4476 or visit SunbirdDCIM.com

About Starline Track Busway

Starline Track Busway is a revolutionary, overhead power distribution system that is available in various sizes from 40 to 1250 amps. The system's most unique feature includes a continuous access slot, meaning power can be tapped at any location. This flexibility makes it the ideal solution for environments that are looking to expand or change layouts; or those who would simply like to have these options available for the future. Other main benefits of the Starline Track Busway product include reduced facility construction costs, faster installation and the ability to customize solutions to fit your needs. Starline Plug-in Units can also be disconnected and connected without de-energizing the busway and the product requires no routine maintenance.

About Sunbird Software

Sunbird Software is changing the way data centers are being managed. With a focus on real user scenarios for real customer problems, we help data center operators manage tasks and processes faster and more efficiently than ever before, while saving costs and improving availability. We strive to eliminate the complexity they have been forced to accept from point tools and home grown applications, removing the dependency on emails and spreadsheets to transform the delivery of data center services. Sunbird delivers on this commitment with unexpected simplicity through products that are easy to find, buy, deploy, use, and maintain. Our solutions are rooted in our deep connections with our customers who share best practices and participate in our user groups and product development process. Based in Somerset, NJ, Sunbird serves over 1,350 DCIM customers worldwide. For more information, please visit SunbirdDCIM.com.

© 2020 Sunbird Software. All rights reserved. dcTrack and Power IQ are registered trademarks of Sunbird Software. All other marks and names mentioned herein may be trademarks of their respective companies.

