

Starline® Track Busway Monitoring with Power IQ® DCIM Software



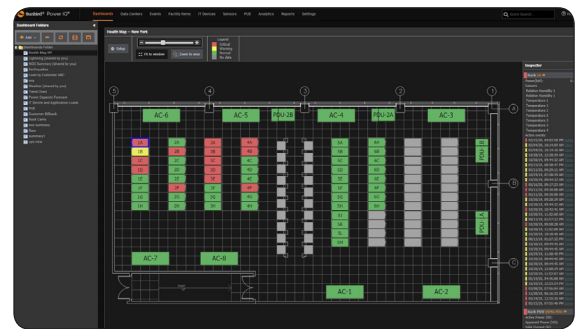
Centrally Manage All Tap Boxes with a Simple, Intuitive Web-Based Dashboard

Power IQ® (PIQ), Sunbird Software's data center monitoring tool, provides the information you need to fully utilize your Starline Track Busway infrastructure, while alerting you to trouble before it causes service-impacting downtime. PIQ's power, energy, and environment monitoring functionality scales to meet your needs, allowing you to securely keep tabs on all your Starline Busway end feeds and tap boxes, plus other CRACs, UPSs, PDUs, RPPs, meters, branch circuits, rack PDUs, environment sensors, and electronic door locks—all from a single easy-to-use web browser.

Make Informed Power and Capacity Planning Decisions

PIQ software tracks actual power load of Starline Tap Boxes, providing more accurate power and capacity planning information.

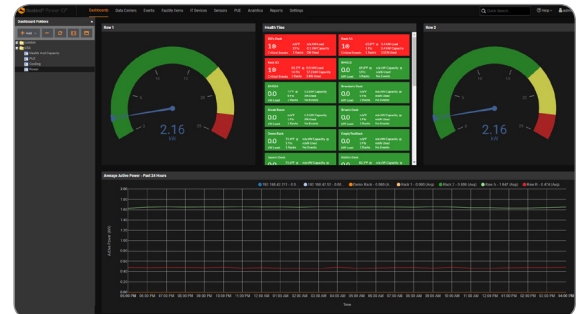
- Find Stranded Power Capacity at Rack Feeds – Newly found capacity delays expensive capital expenditure.
- Project Future Power Capacity Needs – Trending and days of supply projections enable accurate forecasting.
- Visualize Rack- and Row-Level Power Usage – Easily understand total usage vs. budgeted capacity at the cabinet and end feeds and monitor usage trends over time.



Monitor and Centralize Alerts to Prevent Costly Unplanned Downtime

Avoid unplanned downtime that can cost hundreds of thousands of dollars per outage and the health of your complete data center, including critical infrastructure like Starline Busways.

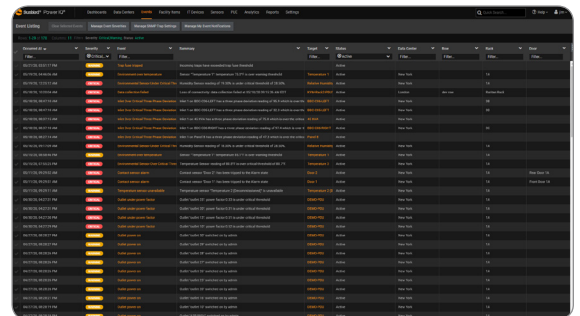
- Simulate Rack Failover – Reports identify available capacity to ensure redundancy in case of failure.
- Visualize Data Center and Facility Health Status – Health map of your data center floor with red, yellow, and green color-coding provides an at-a-glance view of rack load levels, line currents, and all environmental conditions.
- Alerting and Alarming of Threshold Violations – Automated emails enable quick identification of overcurrent conditions, breaker load threshold violations, 3 phase balance issues, and potential trouble areas.
- Multi-Tile Health Chart Widget -- See red, yellow, and green health data for all your data centers, rooms, PODs, zones, rows, and racks in a single screen with the ability to drill-down for full details.



Utilize Power Resources Efficiently and Improve PUE

PIQ automatically collects power and environmental data from sensors and turns that data into actionable insights.

- Real-Time Power Usage Effectiveness (PUE) – See real-time measurements of total facility energy vs. your total IT equipment energy to gauge efficiency and identify opportunities to improve.
- Bill Back Energy Costs Based on Usage – Automatically generated bill back reports drive more energy efficient behavior.





Starline® Track Busway Monitoring with Power IQ® DCIM Software

Sunbird Software, as the software partner of Starline Busway, supports all meters offered by Starline. The list of meters is extensive and will continue to grow. The following table is a living document that describes the series and models supported as of Power IQ (PIQ) version 9.3.3. If you have a newer version, and Starline has introduced new models, it's likely that we will already support those. The table further describes the typical location that the Starline meter is placed, whether it is at the end feed of a row or the tap box above a rack. It describes whether Sunbird collects data from the inlet or outlet of the meter. The tap box meter measures the load at the outlet and can be represented as a rack PDU inlet which correlates to a rack. The end feed meter measures the load at the inlet of the end feed, and that object in PIQ could represent a stand alone meter. A stand alone meter or rack PDU inlet meter consumes one PIQ license each. Further, we provide the last polled reading of data per model such as watts, power factor, kilowatt-hour, kVA, and amps. PIQ always supports the traps that come from the meter. PIQ collects other attributes about the models such as firmware version, name, and location, and gives you the ability to set the name and location on the meter in bulk.

Series	Model	Meter Type	PIQ Data Collection Point	Circuit Breaker Status Reported	Notes	Represented in PIQ as	Data Collection	Trap Support	Firmware Version Reported	Report/Configure Name & Location	PIQ License
M40 Series	M41x	Tap Box	Infeed	No	Sum of Load of Outlets	Rack PDU Inlet*	W, PF, kWh, kVA, A, V	Yes	Yes	Yes	1 Per Meter
	M43x										
	M45x										
	M47x										
	M41xx	End Feed	Infeed	No		Stand Alone Meter	W, PF, kWh, kVA, A, V	Yes	Yes	Yes	1 Per Meter
	M43xx										
	M45xx										
M47xx											
V40 Series	V41x	Tap Box	Outlet	No	Each Outlet is Metered	Rack PDU Inlet	W, PF, kWh, kVA, A	Yes	Yes	Yes	1 Per Metered Outlet
	V43x										
	V45x										
	V47x										
M50 Series	M51x	Tap Box	Infeed	No	Sum of Load of Outlets	Rack PDU Inlet*	W, PF, kWh, kVA, A, V	Yes	Yes	Yes	1 Per Meter
	M53x			Yes							
	M56x			No							
	M57x			Yes							
	M58x			No							
	M59x			Yes							
V50 Series	V51x	Tap Box	Outlet	No		Rack PDU Inlet	W, PF, kWh, kVA, A	Yes	Yes	Yes	1 Per Metered Outlet
	V53x			Yes							
	V56x			No							
	V57x			Yes							
	V58x			No							
	V59x			Yes							
M70 Series	M73x	End Feed	Infeed	No		Stand Alone Meter**	W, PF, kWh, kVA, A, V	Yes	Yes	Yes	1 Per Meter
	M76x										

*Single outlet models can be represented as a connected device such as a rack PDU or a large IT device

**If there is a case where the catalog number has less than four characters, it will be added as a rack PDU

Call 732-993-4476 or visit SunbirdDCIM.com

© 2026 Sunbird Software. All rights reserved. dcTrack and Power IQ are registered trademarks of Sunbird Software. All other marks and names mentioned herein may be trademarks of their respective companies.

