



Data Center Infrastructure Parts Management with DCIM Software

Easily and Accurately Track All Your Parts, Modules, and Cards

- Centrally manage inventory of all hard drives, cards, memory modules, power supplies, patch cables, and any other component, even boxes of screws
- Monitor your inventory of high-value equipment like server blades, network line cards, and transceivers
- Monitor spare parts with user-configurable thresholds to know when you need to purchase more
- Total control to customize your company's own Parts Template and the Parts Model Library
- Track all parts assignments, serial numbers, lifecycle, or any other attribute you desire with custom fields
- Have complete transparency with a fully searchable, sortable, and exportable audit log of all parts transactions

“Using [dcTrack] to maintain documentation of assets’ placement, data and power connections is easy and logical... It is our source of truth for what’s in the data centers.”

Rob Hansen, Engineer II Data Center Infrastructure Systems, **Comcast**

Centrally Manage All Hard Drives, Cards, Memory Modules, Cables, and Any Other Subcomponent

Sunbird Software dramatically expands the scope of the physical data center infrastructure that can be managed in a Data Center Infrastructure Management (DCIM) tool with the Parts Management feature in dcTrack®. Parts Management increases the granularity of data center asset management, enabling you to easily and accurately track the various subcomponents of your devices so you never run out of stock. It is extremely flexible, allowing you to create your own parts templates, specify your parts’ attributes with custom fields, configure your own inventory thresholds and alerts, and monitor every transaction of parts. Now you can centrally manage inventory and assignments of all hard drives, cards, memory modules, power supplies, patch cables, and any other component, even boxes of screws.

Be in Full Control of Your Parts Templates

- Track Every Part with Ease – Create an unlimited number of parts you wish to track.
- Customize Your Part Attributes – Specify the class, make, model, part number, height, width, depth, weight, and any other attribute with custom fields.
- Easily Add New Part Instances – Create a model once, and with each new instance, the existing information is copied to the new part so you don’t need to reenter data.

Track and Monitor High-Value Components and Spare Parts

- Easy and Accurate Parts Management – Get an exact count of your in-stock and in-use levels.
- Find Your Parts in Seconds – Search for any part based upon any attribute such as serial number or asset tag.
- Alerting of Threshold Violations – Automated emails enable quick identification based on user-configurable thresholds of when you need to resupply.
- Visualize All Your Parts – Upload and see high-fidelity images of all your parts.
- Create and Share Views – Create views of your favorite parts reports, and print or export them.

Track Any Attribute You Want with Custom Fields

- Track Everything You Want About Your Parts – Create an unlimited number of fields to track virtually any attribute for any part.
- You’re in Control – Specify what class your parts’ custom fields are associated with.
- Accurate and Reliable – Choose your own picklist options to ensure uniform data nomenclature. You’re not limited to picklist custom fields. You can also have true/false, multi-select picklist, date, etc.

Easily Monitor Your Parts Transactions with Audit Trails

- Track Parts Lifecycle and All Transactions of Parts – See who made each change, when the change was made, what the change from and to, and what the action was.
- Keep Your Transactions Organized – Every transaction is tracked with a unique ID.
- Create Transaction Reports – Sort and filter on any combination of transactions and run a report.
- Reduce Manual Effort and Save Time – Save transaction reports and views and reuse them.

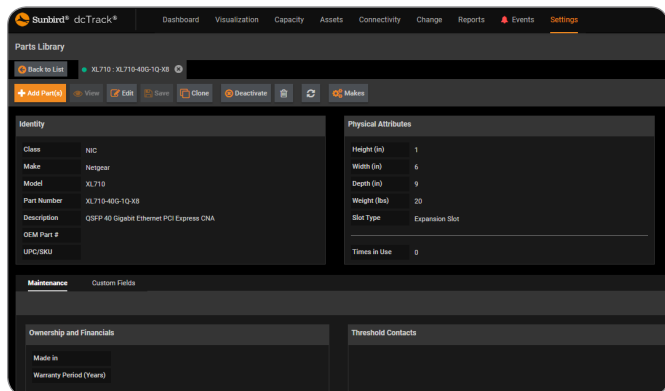


Data Sheet

Data Center Infrastructure Parts Management with DCIM Software

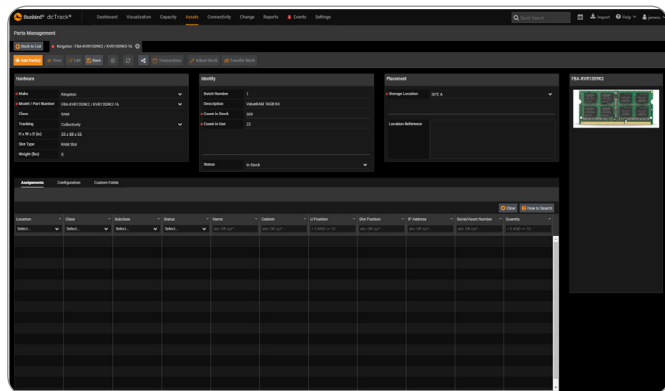
Parts Templates

Build your own inventory of parts and create your own parts library with customizable parts templates, a flexible feature that allows you to define the parts you want to track and which asset they are associated with.



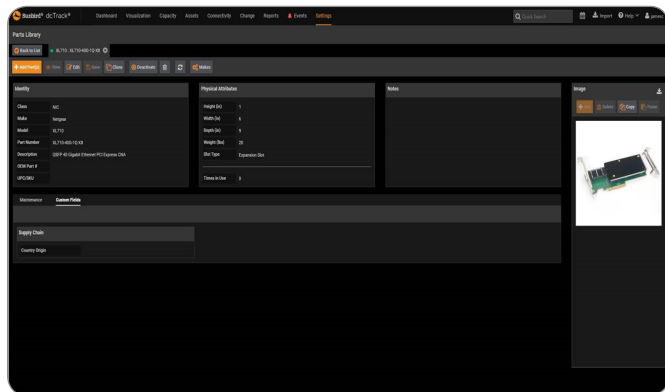
Spare Parts

Sunbird makes it simple for you to manage high-value inventory items, monitor the supply of spare parts, and be alerted when you run below preset thresholds.



Custom Fields

Custom fields allow you to track any attribute about a part that you desire to make it easy to keep tabs on what's important to you.



Parts Transactions

Sunbird provides complete transparency with a fully searchable, sortable, and exportable audit log of all parts transactions.

ID	Asset	Model	Part Number	Serial Asset/Stock Number	Storage Location	ASL	Action	Changed From	Changed To	Changed By	Changed On
107	Network-Switch	DC-30212	408	26-1108	SITE A	Asset	Close to Stock	Adjustment	1	0	08/20/2020
108	Asset	Power-Processor	E3-1200		SITE A	Asset	Close to Stock	Counter	5	0	08/20/2020
109	Storage	RAID-Array	30262-7X	26-1022A	SITE A	Asset	Close to Stock	Counter	3	1	08/20/2020
110	Asset	Power-Processor	E3-1200		SITE A	Asset	Close to Stock	Adjustment	1	1	08/20/2020
111	Asset	Power-Processor	E3-1200		SITE A	Asset	Close to Stock	Adjustment	0	0	08/20/2020
112	Storage	RAID-Array	401818902-14		SITE A	Asset	Close to Stock	Counter	3	0	08/20/2020
113	Storage	RAID-Array	401818902-14		SITE A	Asset	Close to Stock	Counter	3	0	08/20/2020
114	Storage	RAID-Array	401818902-14		SITE A	Asset	Close to Stock	Counter	3	0	08/20/2020
115	Storage	RAID-Array	401818902-14		SITE A	Asset	Close to Stock	Counter	3	0	08/20/2020
116	Asset	Power-Processor	E3-1200		SITE A	Asset	Close to Stock	Adjustment	1	1	08/20/2020
117	Asset	Power-Processor	E3-1200		SITE A	Asset	Close to Stock	Adjustment	0	0	08/20/2020
118	Asset	Power-Processor	E3-1200		SITE A	Asset	Close to Stock	Adjustment	0	0	08/20/2020
119	Asset	Power-Processor	E3-1200		SITE A	Asset	Close to Stock	Adjustment	0	0	08/20/2020
120	Asset	Power-Processor	E3-1200		SITE A	Asset	Close to Stock	Adjustment	0	0	08/20/2020
121	Storage	RAID-Array	30262-7X		SITE A	Asset	Close to Stock	Counter	3	0	08/20/2020
122	Storage	RAID-Array	30262-7X		SITE A	Asset	Close to Stock	Counter	3	0	08/20/2020
123	Storage	RAID-Array	30262-7X		SITE A	Asset	Close to Stock	Counter	3	0	08/20/2020
124	Storage	RAID-Array	30262-7X		SITE A	Asset	Close to Stock	Counter	3	0	08/20/2020
125	Storage	RAID-Array	30262-7X		SITE A	Asset	Close to Stock	Counter	3	0	08/20/2020
126	Storage	RAID-Array	30262-7X		SITE A	Asset	Close to Stock	Counter	3	0	08/20/2020
127	Storage	RAID-Array	30262-7X		SITE A	Asset	Close to Stock	Counter	3	0	08/20/2020
128	Storage	RAID-Array	30262-7X		SITE A	Asset	Close to Stock	Counter	3	0	08/20/2020
129	Storage	RAID-Array	30262-7X		SITE A	Asset	Close to Stock	Counter	3	0	08/20/2020
130	Storage	RAID-Array	30262-7X		SITE A	Asset	Close to Stock	Counter	3	0	08/20/2020
131	Storage	RAID-Array	30262-7X		SITE A	Asset	Close to Stock	Counter	3	0	08/20/2020
132	Storage	RAID-Array	30262-7X		SITE A	Asset	Close to Stock	Counter	3	0	08/20/2020
133	Storage	RAID-Array	30262-7X		SITE A	Asset	Close to Stock	Counter	3	0	08/20/2020
134	Storage	RAID-Array	30262-7X		SITE A	Asset	Close to Stock	Counter	3	0	08/20/2020
135	Storage	RAID-Array	30262-7X		SITE A	Asset	Close to Stock	Counter	3	0	08/20/2020
136	Storage	RAID-Array	30262-7X		SITE A	Asset	Close to Stock	Counter	3	0	08/20/2020
137	Storage	RAID-Array	30262-7X		SITE A	Asset	Close to Stock	Counter	3	0	08/20/2020
138	Storage	RAID-Array	30262-7X		SITE A	Asset	Close to Stock	Counter	3	0	08/20/2020
139	Storage	RAID-Array	30262-7X		SITE A	Asset	Close to Stock	Counter	3	0	08/20/2020
140	Storage	RAID-Array	30262-7X		SITE A	Asset	Close to Stock	Counter	3	0	08/20/2020
141	Storage	RAID-Array	30262-7X		SITE A	Asset	Close to Stock	Counter	3	0	08/20/2020
142	Storage	RAID-Array	30262-7X		SITE A	Asset	Close to Stock	Counter	3	0	08/20/2020
143	Storage	RAID-Array	30262-7X		SITE A	Asset	Close to Stock	Counter	3	0	08/20/2020
144	Storage	RAID-Array	30262-7X		SITE A	Asset	Close to Stock	Counter	3	0	08/20/2020
145	Storage	RAID-Array	30262-7X		SITE A	Asset	Close to Stock	Counter	3	0	08/20/2020
146	Storage	RAID-Array	30262-7X		SITE A	Asset	Close to Stock	Counter	3	0	08/20/2020
147	Storage	RAID-Array	30262-7X		SITE A	Asset	Close to Stock	Counter	3	0	08/20/2020
148	Storage	RAID-Array	30262-7X		SITE A	Asset	Close to Stock	Counter	3	0	08/20/2020
149	Storage	RAID-Array	30262-7X		SITE A	Asset	Close to Stock	Counter	3	0	08/20/2020
150	Storage	RAID-Array	30262-7X		SITE A	Asset	Close to Stock	Counter	3	0	08/20/2020
151	Storage	RAID-Array	30262-7X		SITE A	Asset	Close to Stock	Counter	3	0	08/20/2020
152	Storage	RAID-Array	30262-7X		SITE A	Asset	Close to Stock	Counter	3	0	08/20/2020
153	Storage	RAID-Array	30262-7X		SITE A	Asset	Close to Stock	Counter	3	0	08/20/2020

Call 732.993.4476 or visit SunbirdDCIM.com

Sunbird Software is changing the way data centers are being managed. With a focus on real user scenarios for real customer problems, we help data center operators manage tasks and processes faster and more efficiently than ever before, while saving costs and improving availability. We strive to eliminate the complexity they have been forced to accept from point tools and home grown applications, removing the dependency on emails and spreadsheets to transform the delivery of data center services. Sunbird delivers on this commitment with unexpected simplicity through products that are easy to find, buy, deploy, use, and maintain. Our solutions are rooted in our deep connections with our customers who share best practices and participate in our user groups and product development process.

Based in Piscataway, NJ, Sunbird serves over 1,850 DCIM customers worldwide. For more information, please visit SunbirdDCIM.com.

© 2022 Sunbird Software. All rights reserved. dcTrack and Power IQ are registered trademarks of Sunbird Software. All other marks and names mentioned herein may be trademarks of their respective companies.

