










Using DCIM to Help a Data Center Move to a Colocation Facility



Table of Contents

-  Overview
-  What is DCIM?
-  What are the key issues in managing a data center that is co-located?
-  Why consider DCIM before the move?
-  How can DCIM help make the move more efficient?
-  How can DCIM help to monitor and manage operations once your co-located data center goes live?
-  Real-world use case
-  Summary
-  Next steps

1 Overview

As companies explore new ways to cut costs, many have considered moving their data centers and becoming a “tenant” of a colocation (colo) facility. According to Data Center Journal*, as of 2013, it was “estimated there are more than 1,000 colocation data centers in the United States alone.”

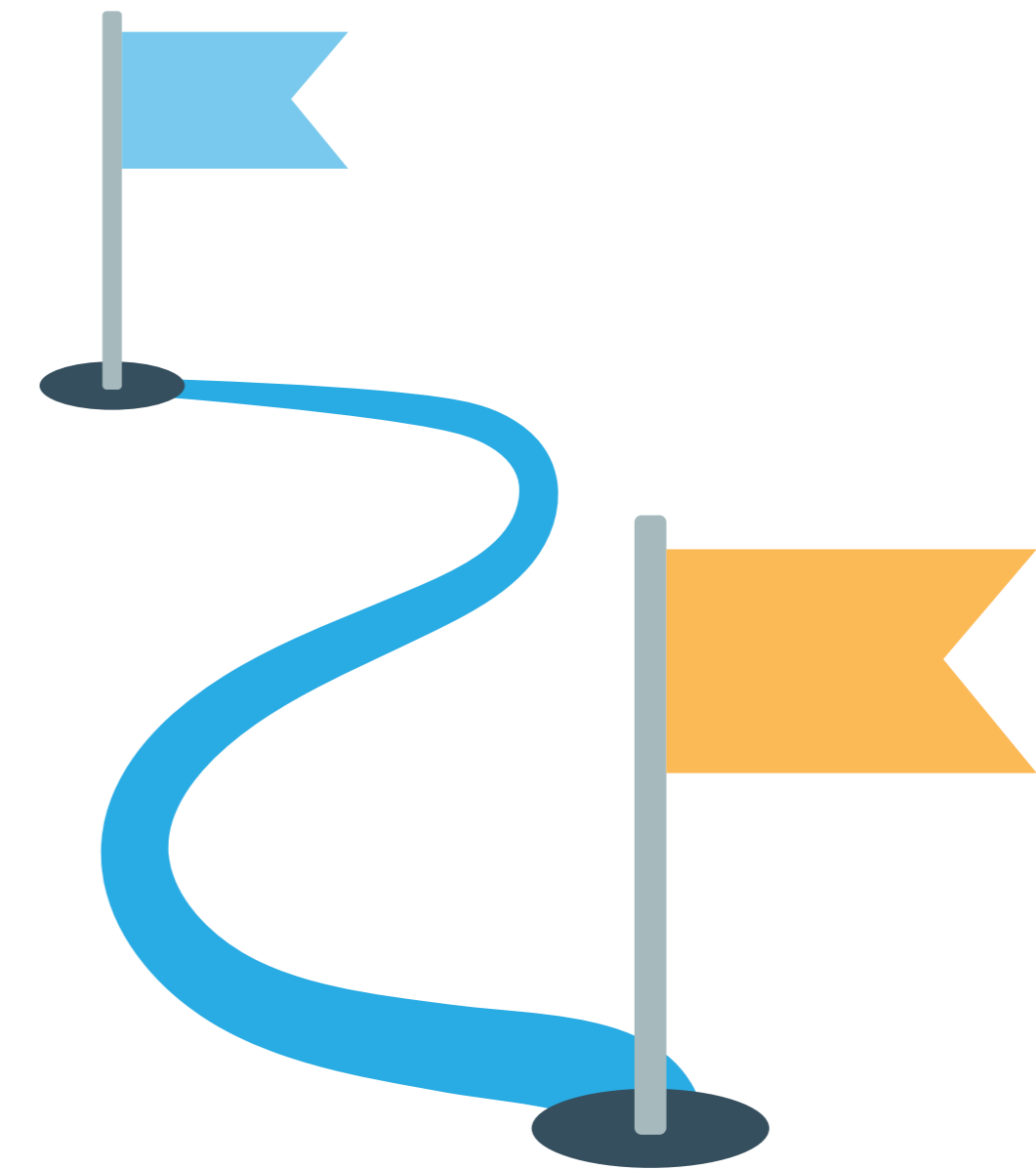
There are several drivers that are causing people to consider moving out of their own data center and into a colocation facility:

- Existing data centers have reached the end of their life
- The existing data center is running out of power and cooling capacity

However along with this move, companies are apprehensive with regard to potentially “losing control and visibility” into their assets and performance of such. Additionally, companies face the challenge of preparing for a move and getting a handle on the assets to be moved.

On the pages that follow, we explore key issues when moving to a colocation facility, how Data Center Infrastructure (DCIM) helps with an actual move, and how DCIM can help remotely manage and monitor the data center on an ongoing basis.

*<http://www.datacenterjournal.com/dcj-magazine/dcim-and-colocation-a-roadmap-for-success/>



Get the full eBook by
clicking the link below



[DOWNLOAD FREE EBOOK >](#)